



## Sonoma County Community Development Commission

If you currently operate a business and you lease or own commercial space in The Springs you may be eligible for financial assistance from the Sonoma County Community Development Commission's Redevelopment Agency to spruce up your storefront property.

The program supports business retention and attraction through the rehabilitation, renovation, and improvement of existing commercial buildings.



## Commercial Rehabilitation Loans

are now available for business tenants and property owners located in the Springs Redevelopment Project Area along the Sonoma Highway Corridor.



FOR MORE INFORMATION ON THE PROGRAM GUIDELINES  
CONTACT THE SONOMA COUNTY  
COMMUNITY REDEVELOPMENT AGENCY

(707) 565-7523

[SONOMA-COUNTY.ORG/CDC/REDEVSONOMAVALLEY.HTML](http://SONOMA-COUNTY.ORG/CDC/REDEVSONOMAVALLEY.HTML)

# COMMERCIAL REHABILITATION LOAN PROGRAM

*The Springs*



SONOMA COUNTY  
COMMUNITY DEVELOPMENT COMMISSION

## The Commercial Rehabilitation Loan Program is a great way to make an impact on how the community views your business.

You may receive a loan up to \$100,000 for the rehabilitation or renovation of commercial buildings, as well as professional design services in an amount up to \$3,500 provided through the Commission at no charge. Eligible projects should make a substantial visible improvement



### Who is eligible?

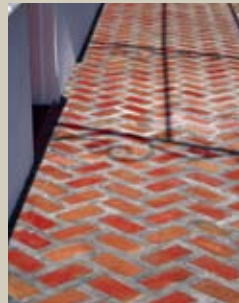
Both commercial tenants (business owners) and commercial property owners are eligible to apply.

The property must be located within The Springs Redevelopment Project Area. A map of the project area can be found at:

[SONOMA-COUNTY.ORG/CDC/REDEVSONOMAVALLEY.HTM](http://SONOMA-COUNTY.ORG/CDC/REDEVSONOMAVALLEY.HTM)

### What improvements qualify?

- PAINTING & PLASTERING
- SIGNAGE & GRAPHICS
- AWNINGS OR CANOPIES
- WINDOWS & DOORS
- ARCHITECTURAL ELEMENTS
- MASONRY
- EXTERIOR LIGHTING
- LANDSCAPING
- OTHER REHABILITATION



### What are the terms of the program?

Your business may qualify for loans ranging up to \$100,000 for improvements depending on the size of the project you have in mind:

#### COMMERCIAL REHABILITATION LOAN TERMS:

AMOUNT:	up to \$100,000
INTEREST RATE:	0-2% Based on matching funds
TERM:	Not to exceed 20-Year Term
DESIGN SERVICES:	Up to \$3,500 per applicant
SECURITY	Loan must be secured by the property being improved.

### Eligibility

To be eligible for a Commercial Rehabilitation Improvement Loan, the following conditions must be met:

- Must make a **substantial visible improvement**.
- If the applicant is a Business Tenant, the **property owner must sign an authorization** for improvements and the deed of trust recorded on title of improved property.
- **All property taxes and sales taxes must be current** to be eligible for the program.
- Commission staff must determine that project will result in a **substantial visible improvement viewable from the public right-of-way**.
- Applicants must obtain loan approval from Commission staff before work begins on any improvements to be assisted under the Program. **Retroactive applications will not be accepted.**
- Work on historically significant properties must **enhance and be sensitive to the historic nature** of the building façade.
- For properties with multiple storefronts, it is recommended that the **façade treatment provide a cohesive theme** while also allowing for some distinctive design elements to the various businesses, such as signage, exposing transom windows, lighting, blower boxes, and murals, to provide better street visibility and promote economic development.
- All improvements must be in **conformance with applicable County Codes** and the Highway 12 Design Guidelines.

### How does the program work?

The applicant is required to enter into a loan agreement and to commit to maintain the improvements for the term of the loan.

The business owner will be required to make regular monthly payments during the term of the loan.

ADDITIONAL REQUIREMENTS AND RESTRICTIONS APPLY. FOR DETAILS, SEE THE PROGRAM GUIDELINES ARE AVAILABLE AT:

[SONOMA-COUNTY.ORG/CDC/REDEVSONOMAVALLEY.HTM](http://SONOMA-COUNTY.ORG/CDC/REDEVSONOMAVALLEY.HTM)